

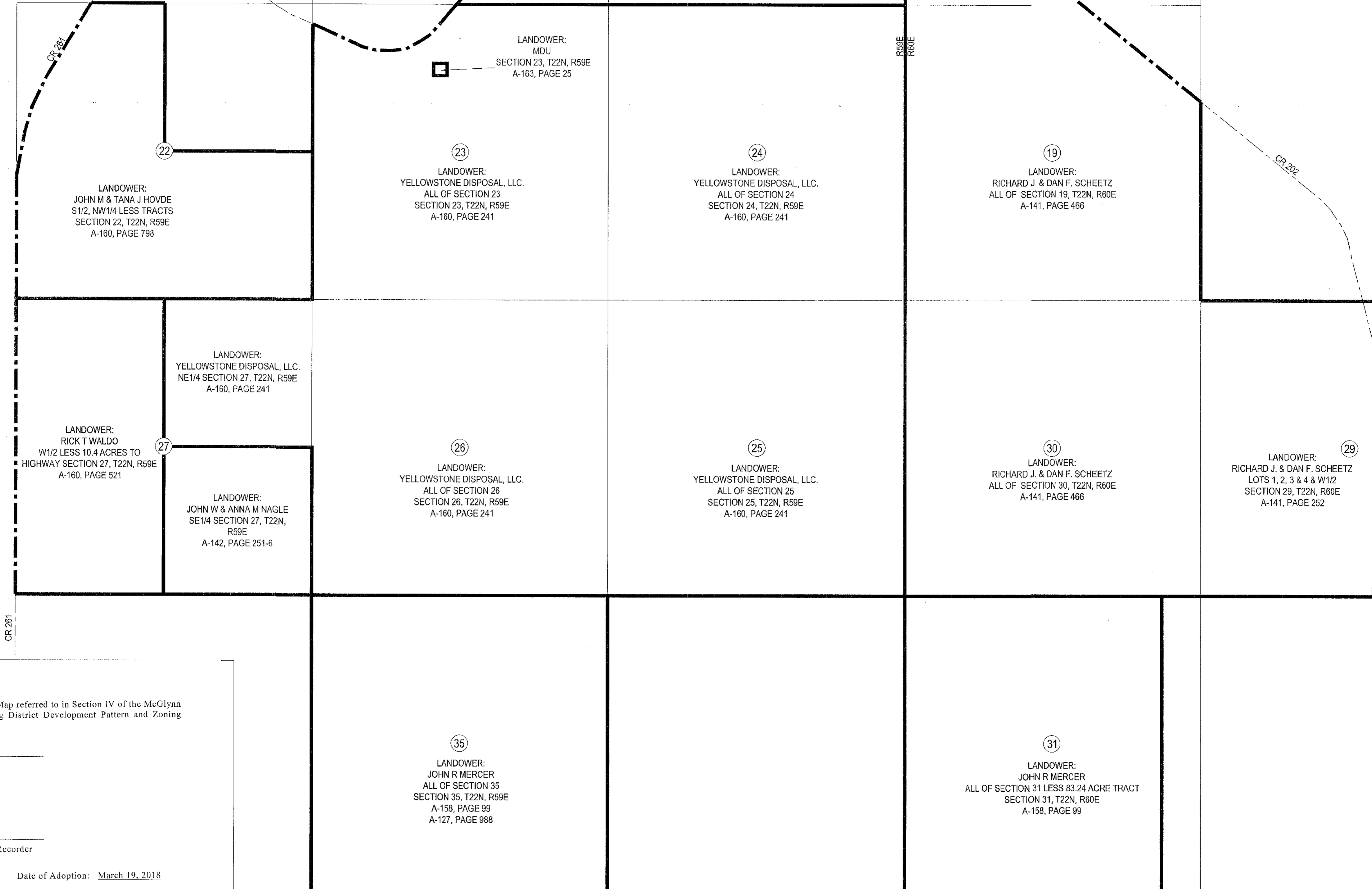
McGLYNN RESERVOIR CITIZEN INITIATED ZONING DISTRICT MAP

WITHIN SECTIONS 18,19, 29, 30, 31, T22N, R60E &
SECTIONS 13,14, 22, 23, 24, 25, 26, 27 & 35, T22N, R59E, P.M.M.
RICHLAND COUNTY, MONTANA

FOR RICHLAND COUNTY CLERK AND RECORDER

601703 MISC FILE Page: 1
STATE OF MONTANA RICHLAND COUNTY
RECORDED: 10/25/2018 2:34 KOI: MAP
STEPHANIE VERHASSELT CLERK AND RECORDER
FEE: \$0.00 BY: *Renae Young*
TO:

ENV# 796A

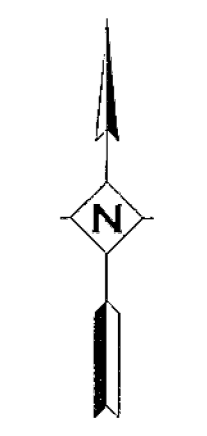


This is to certify that this is the Official Zoning Map referred to in Section IV of the McGlynn Reservoir Citizen Initiated Planning and Zoning District Development Pattern and Zoning Regulations.

Duane Mitchell
Duane Mitchell, Chair
Board of Richland County Commissioners

Attested by:
Stephanie Verhasselt
Stephanie Verhasselt, Richland County Clerk & Recorder

Date of Adoption: March 19, 2018



NOT TO SCALE

| Revision No. | Date | By | Description |
|--------------|---------|-----|--------------------|
| REV 1 | 5/20/18 | JDM | UPDATES TO EXHIBIT |

McGLYNN RESERVOIR DISTRICT MAP
SECTIONS 18, 19, 29-31, T22N, R60E
SECTIONS 13, 14, 22-27 & 35, T22N, R59E

SIDNEY, MONTANA

Project No.: SH-09-023
Date: FEB 2018

Drawn By: J.D.M.
Checked By: D.D.K.

Interstate Engineering, Inc.
P.O. Box 648
425 East Main Street
Sidney, Montana 59270
Ph (406) 433-5617
Fax (406) 433-5618
www.interstateeng.com

Other offices in Minnesota, North Dakota and South Dakota

INTERSTATE ENGINEERING
Professionals you need, people you trust.

1